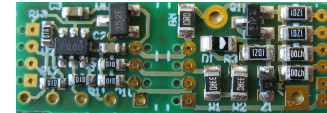
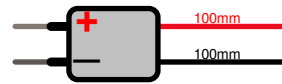
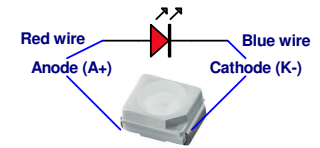
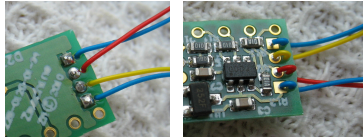
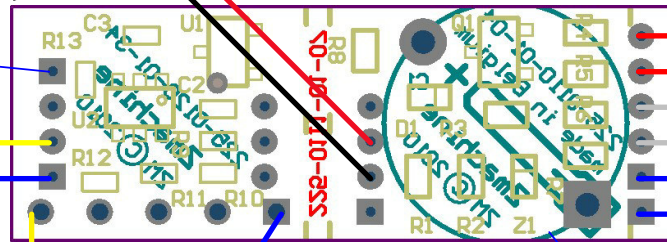
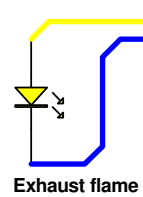


Please use non plated through holes to secure wiring



All square pads may be used as negative common (0 volt)

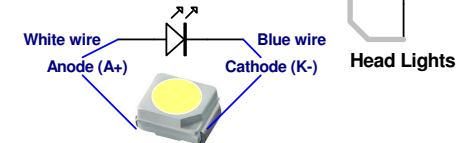


!!! CAUTION !!! SuperCap is polarized !!!

Alternative or second exhaust flame led connections

Tail Lights

Soldering all wires previously to SuperCap is much more comfortable, wires & SuperCap may be mounted on any side of the PCB.



Head Lights

Model #151A

Features :

- * Reverse voltage & overcurrent protection
- * Stabilized power head & tail lights (w. energy backup).
- * Exhaust flame simulation.

Main characteristics :

Dimensions (L x l x h) : 29 x 10 x 6 mm max (w. supercap)
 Weight : +/- 3 gr (w. power conn & supercap)
 Power supply : min 8Vdc/ac - Max 25Vdc/ac (Davic compatible)
 Power consumption : Max 75mA peak - 18mA continuous (@12.8Vdc)

Model #151A RTA kit - P/N E225-0151-02-31

Parts list :

- 1 ea. Full PCB assy. ref# E225-0131-01-67
- 1 ea. Supercap 0.22F/5V5 ref# E225-0140-01-94
- 1 ea. Power male conn. ref# E225-0141-02-01
- 2 ea. Prewired front xenon white PLCC led ref# E225-0142-02-04
- 2 ea. Prewired rear super red PLCC led ref# E225-0143-02-07
- 1 ea. Prewired exhaust yellow 0603 Led ref# E225-144-01-09

#151A

rev. 6/09/2010



<http://www.zmachine.be> - phl@zmachine.be - Zmachine Electric Motorsport