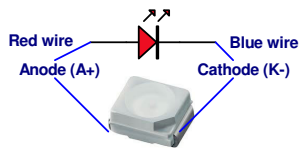


1

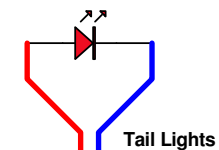
2

3

4



Soldering all wires previously to SuperCap is much more comfortable, wires & SuperCap may be mounted on any side of the PCB.



110mm

110mm

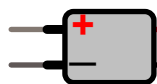
140mm

140mm

140mm

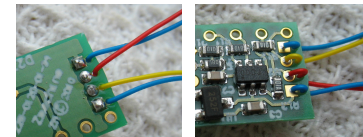
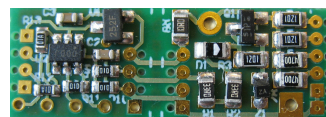
140mm

Exhaust flame

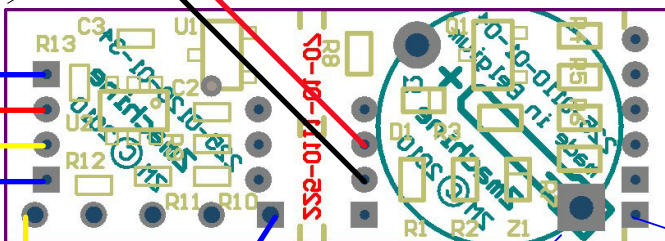


100mm

100mm



Please use non plated through holes to secure wiring



**Model #152**

**Features :**

- \* Reverse voltage & overcurrent protection
- \* High intensity brake lights.
- \* Exhaust flame simulation.
- \* On Standby, flashing taillights.

**Main characteristics :**

Dimensions (L x l x h) : 29 x 10 x 6 mm max (w. supercap)  
 Weight : +/- 2.5 gr (w. power conn & supercap)  
 Power supply : min 8Vdc/ac - Max 25Vdc/ac (Davic compatible)  
 Power consumption : Max 75mA peak - 5mA continuous (@12.8Vdc)

**Model #152 RTA kit - P/N E225-0152-01-33**

**Parts list :**

- 1 ea. Full PCB assy. ref# E225-0131-01-67
- 1 ea. Supercap 0.22F/5V5 ref# E225-0140-01-94
- 1 ea. Power male conn. ref# E225-0141-02-01
- 1 ea. Prewired dual // rear super red PLCC led ref# E225-0143-04-09
- 1 ea. Prewired exhaust yellow 0603 Led ref# E225-144-01-09

**#152**

rev. 06/09/2010



<http://www.zmachine.be> - [phl@zmachine.be](mailto:phl@zmachine.be) - Zmachine Electric Motorsport

1

2

3

4